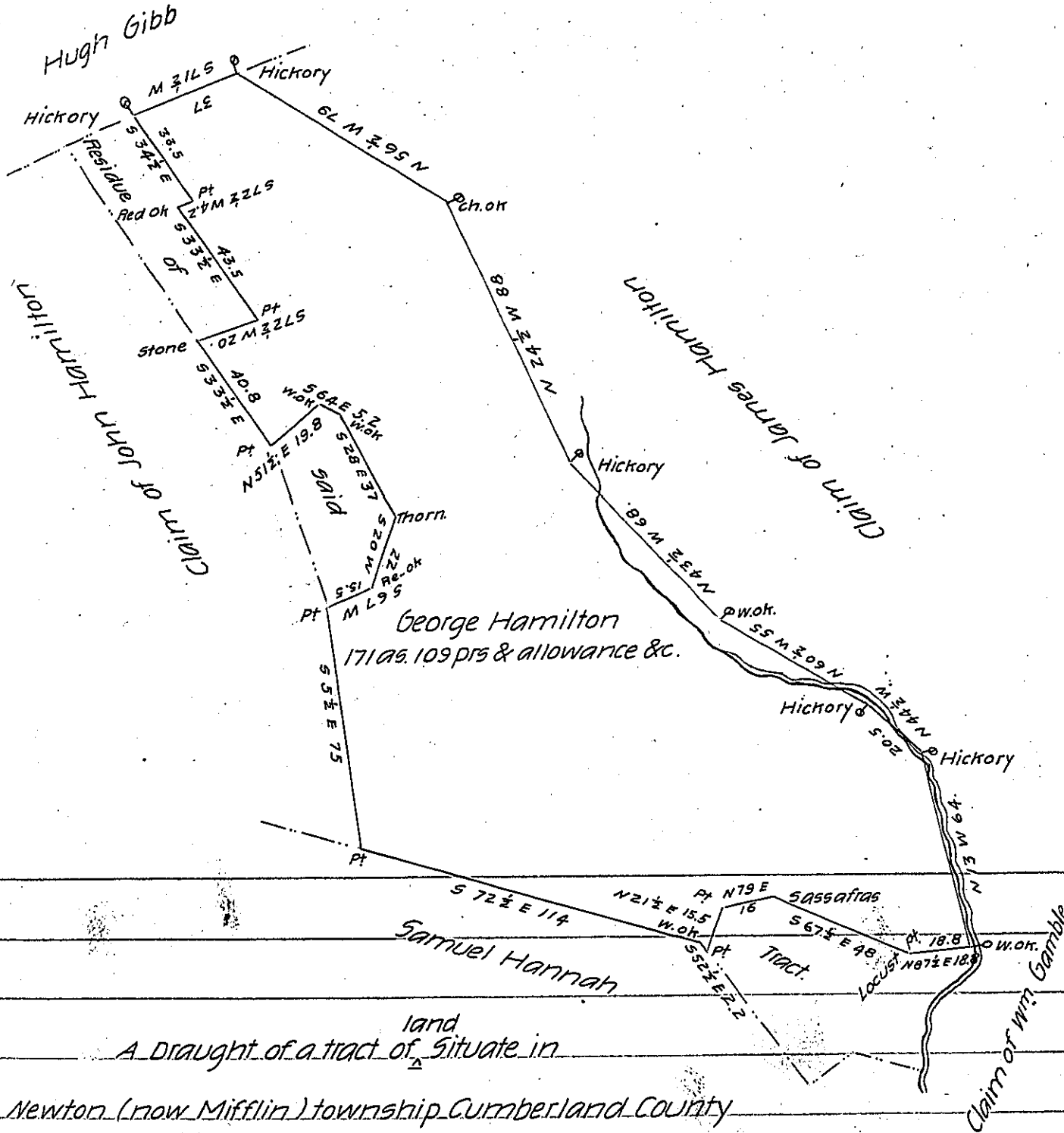


C 80-174



A Draught of a tract of <sup>land</sup> situate in  
 Newton (now Mifflin) township Cumberland County  
 Containing one hundred & seventy-one acres & one hundred & nine perch-  
 es and the usual allowance of six pr. cent for roads &c. ~~Originally~~ Part of  
 205 as. & 27 prs & allowance &c. Surveyed 16th February 1767, on a warrant  
 granted to George Hamilton for 200 as. dated July 1st 1763. Surveyed for  
 John Shulenberger December 1834.

Patrick Davidson D.S.

To Jacob Spangler Esqr  
 Surveyor General

IN TESTIMONY that the above is a copy of the original remaining on file in  
 the Department of Internal Affairs of Pennsylvania, made  
 conformably to an Act of Assembly approved the 16th day of  
 February, 1833, I have hereunto set my Hand and caused  
 the Seal of said Department to be affixed at Harrisburg,  
 this nineteenth day of May 1905.

*James D. Brown*  
 Secretary of Internal Affairs.